



# *Kansas Water Authority*

## *2012 Annual Report to the Governor and Legislature*

### *Executive Summary*

This past year has truly been a year of extremes. Many areas of Kansas were the hottest and driest on record. As a result, we have seen crops dry up, cattle herds be sold and water levels drop. Along our northeastern border, the Missouri River rose to nearly unprecedented levels and flooded communities and farms.

While we work to manage the extreme conditions of this year, we must also look to the future to ensure we have a dependable supply of quality water. In July, Governor Brownback hosted an economic summit on the Ogallala Aquifer in Colby. We heard many suggestions at this summit and created a committee to look at the policies surrounding the Ogallala Aquifer.

Reservoir issues continue to be a source of concern. During the later portion of our summer, algae blooms affected dozens of reservoirs in Kansas, closing some of Kansas' most popular recreational destinations and impacting our water supply.

Adequate funding of water supply efforts continues to be a challenge. Once again, the Kansas Water Authority recommends ten percent of the Expanded Lottery Act Revenue Fund be dedicated to water resources. Below are short summaries of the policy issues that the Kansas Water Authority believes should be addressed this legislative session.

The Kansas Water Authority stands ready to help our fellow citizens as they recover from the flooding and drought conditions and assist as you consider policy and funding changes necessary to meet Kansas' water needs.



Gary Harshberger, Chair  
Kansas Water Authority

#### *The Kansas Water Authority has taken action to support the following legislative proposals*

- ▶ **Abandonment Statute** - The Kansas Water Authority supports amendment of the abandonment statute ("use it or lose it") for ground water rights in areas closed to new water right development. The amendment would protect those rights from unintentional forfeiture while promoting a culture of conservation.
- ▶ **Multi-Year Flex Accounts** - Amend the multi-year flex accounts legislation (K.S.A. 82a-736) to give irrigators expanded capabilities to manage their crop water over a five-year period, a useful tool when there is limited water.
- ▶ **Water Banks** - Amend the Kansas Water Banking Act (K.S.A. 82a-761 *et seq*) to allow development of additional Water Banks for a market-based program to relocate water use and provide conservation in water short areas. In addition, amendments would clarify that a bank would be permanent after its initial seven-year review and the Chief Engineer supports the bank charter renewal.
- ▶ **Local Ground Water Management Areas** - Amend the Groundwater Management Act to provide a process for a proactive conservation plans (called Local Enhancement Management Plans, or LEMAs) that can have mandatory reductions, if supported by the Groundwater Management Districts, has corrective measures that address conservation needs, and is approved by the Chief Engineer.



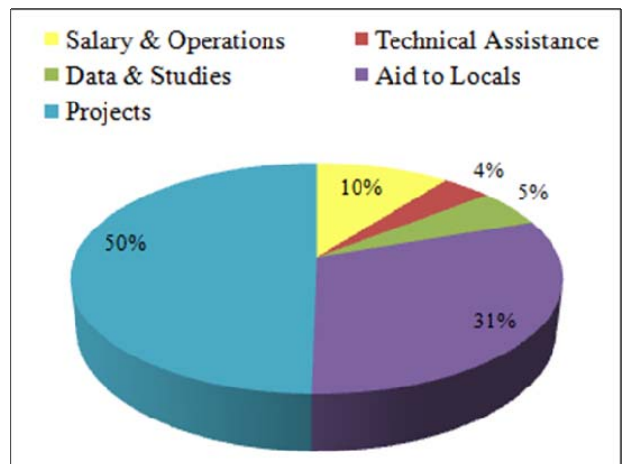
901 S. Kansas Ave.  
Topeka, KS 66612  
785-296-3185  
[www.kwo.org](http://www.kwo.org)

## STATE WATER PLAN FUND REVENUE ESTIMATE

State Water Plan Resource Estimate	FY 2011 Actuals	FY 2012 Legislative Approved	FY 2013 SWPF Estimate	FY 2013 SGF Request	FY 2013 10% ELARF Estimate
<b>Beginning Balance</b>	\$ 4,211,026	\$ 4,119,113	\$ 57,903	\$ -	\$ -
<b>Adjustments</b>					
Reappropriations	\$ -	\$ -	\$ -	\$ -	\$ -
KPERS D&D Moratorium (transfer to SGF)	\$ (2,327)	\$ -	\$ -	\$ -	\$ -
Released Encumbrances	\$ -	\$ 43	\$ -	\$ -	\$ -
Standardized Water Data Fund Transfer HB2014 Sec 41	\$ -	\$ 300,000	\$ -	\$ -	\$ -
Feral Swine Eradication Fund Transfer HB2014 Sec 138	\$ -	\$ (175,000)	\$ -	\$ -	\$ -
Livestock Market Report Fund Transfer HB2014 Sec 138	\$ -	\$ (20,000)	\$ -	\$ -	\$ -
Grain Warehouse Inspection Fund Transfer HB2014 Sec 138	\$ -	\$ (75,000)	\$ -	\$ -	\$ -
CDWFF Transfer - 2010 House Amendment(SB572	\$ (300,000)	\$ -	\$ -	\$ -	\$ -
Transfer to Kansas Corporation Commission	\$ (374,865)	\$ (400,000)	\$ (364,000)	\$ -	\$ -
<b>Subtotal--Adjustments</b>	<b>\$ (677,192)</b>	<b>\$ (369,957)</b>	<b>\$ (364,000)</b>	<b>\$ -</b>	<b>\$ -</b>
<b>Revenues</b>					
State General Fund Transfer	\$ 1,348,245	\$ -	\$ -	\$ 6,000,000	\$ -
Economic Development Fund Transfer	\$ 2,000,000	\$ 2,000,000	\$ 2,000,000	\$ -	\$ -
Municipal Water Fees	\$ 3,146,069	\$ 3,175,330	\$ 3,207,084	\$ -	\$ -
Clean Drinking Water Fee Fund	\$ 2,845,569	\$ 2,857,797	\$ 2,886,375	\$ -	\$ -
Industrial Water Fees	\$ 1,026,703	\$ 1,117,654	\$ 1,128,830	\$ -	\$ -
Stock Water Fees	\$ 348,862	\$ 356,460	\$ 360,025	\$ -	\$ -
Pesticide Registration Fees	\$ 1,153,740	\$ 941,000	\$ 941,000	\$ -	\$ -
Fertilizer Registration Fees	\$ 3,668,297	\$ 3,500,000	\$ 3,500,000	\$ -	\$ -
Pollution Fines and Penalties	\$ 565,426	\$ 173,250	\$ 175,000	\$ -	\$ -
Sand Royalty Receipts	\$ 107,915	\$ 71,987	\$ 70,000	\$ -	\$ -
Expanded Lottery Act Revenues Fund	\$ -	\$ -	\$ -	\$ -	\$ 8,500,000
<b>Total Receipts</b>	<b>\$ 16,210,826</b>	<b>\$ 14,193,478</b>	<b>\$ 14,268,314</b>	<b>\$ 6,000,000</b>	<b>\$ 8,500,000</b>
Total Available	\$ 19,744,660	\$ 17,942,634	\$ 13,962,217	\$ 6,000,000	\$ 8,500,000
Less: Expenditures	\$ (15,625,547)	\$ (14,659,551)	\$ (13,339,975)	\$ (6,000,000)	\$ (8,500,000)
<b>Ending Balance</b>	<b>\$ 4,119,113</b>	<b>\$ 3,283,083</b>	<b>\$ 622,242</b>	<b>\$ -</b>	<b>\$ -</b>

*The KWA supports the following budget allocation/requests*

- ▶ **ELARF Water Projects** – The Kansas Water Authority recommends an allocation of 10 percent of the Expanded Lottery Act Revenue Fund (ELARF) revenues for water related projects.
- ▶ **Nutrient Reduction Proposal** – The Kansas Water Authority recommends a FY 2013 budget request of \$6 million for the development of a new program that will allow for a more targeted approach in reducing sedimentation and nutrient loading into our waterways and reservoirs.



## STATE WATER PLAN FUND EXPENDITURE RECOMMENDATIONS

Agency/Program	FY 2011 Actuals	FY 2012 Available Budget	FY 2013 KWA Recom- mended	FY 2013 SGF Request	FY 2013 ELARF Request
<b>Department of Health &amp; Environment</b>					
Contamination Remediation	\$ 753,705	\$ 790,118	\$ 775,000	\$ -	\$ 250,000
TMDL Initiatives	\$ 188,376	\$ 252,669	\$ 200,000	\$ -	\$ -
Local Environmental Protection Program	\$ 980,000	\$ -	\$ -	\$ -	\$ -
Nonpoint Source Program	\$ 269,558	\$ 374,044	\$ 300,000	\$ -	\$ -
Watershed Restoration & Protection Strategy	\$ 548,696	\$ 716,351	\$ 625,000	\$ -	\$ -
Treece Superfund	\$ 349,953	\$ -	\$ -	\$ -	\$ -
<b>Total - Department of Health &amp; Environment</b>	<b>\$ 3,090,288</b>	<b>\$ 2,133,182</b>	<b>\$ 1,900,000</b>	<b>\$ -</b>	<b>\$ 250,000</b>
<b>Univ. of Kansas - Geological Survey</b>	<b>\$ 28,800</b>	<b>\$ 26,841</b>	<b>\$ 30,000</b>	<b>\$ -</b>	<b>\$ -</b>
<b>Department of Agriculture, Division of Water Resources</b>					
Interstate Water Issues	\$ 376,891	\$ 564,824	\$ 460,000	\$ -	\$ -
Subbasin Water Resources Management	\$ 556,223	\$ 708,308	\$ 619,220	\$ -	\$ -
Water Use	\$ 10,000	\$ 83,697	\$ 60,000	\$ -	\$ -
<b>Subtotal - Department of Agriculture, Division of Water Resources</b>	<b>\$ 943,114</b>	<b>\$ 1,356,829</b>	<b>\$ 1,139,220</b>	<b>\$ -</b>	<b>\$ -</b>
<b>Department of Agriculture - Division of Conservation</b>					
Water Resources Cost Share	\$ 2,745,777	\$ 2,709,399	\$ 2,008,700	\$ -	\$ -
Nonpoint Source Pollution Asst.	\$ 2,261,671	\$ 3,097,773	\$ 2,008,691	\$ -	\$ -
Aid to Conservation Districts	\$ 2,133,796	\$ 2,259,754	\$ 2,260,000	\$ -	\$ -
Watershed Dam Construction	\$ 723,155	\$ 696,140	\$ 625,000	\$ -	\$ 1,000,000
Water Quality Buffer Initiative	\$ 268,206	\$ 280,375	\$ 270,000	\$ -	\$ -
Riparian & Wetland Program	\$ 77,390	\$ 299,411	\$ 165,000	\$ -	\$ -
Water Supply Restoration Program	\$ 653,673	\$ 257,668	\$ 190,000	\$ -	\$ 1,500,000
Water Transition Assistance Program/CREP	\$ 346,940	\$ 2,000,811	\$ 425,000	\$ -	\$ 1,000,000
Nutrient and Sediment Reduction	\$ -	\$ -	\$ -	\$ 6,000,000	\$ -
Streambank Stabilization	\$ -	\$ -	\$ -	\$ -	\$ 1,000,000
Improved Irrigation Systems Efficiency/Management	\$ -	\$ -	\$ -	\$ -	\$ 1,000,000
<b>Subtotal - Department of Agriculture, Division of Conservation</b>	<b>\$ 9,210,608</b>	<b>\$ 11,601,331</b>	<b>\$ 7,952,391</b>	<b>\$ 6,000,000</b>	<b>\$ 5,500,000</b>
<b>Total - Department of Agriculture</b>	<b>\$ 10,153,722</b>	<b>\$ 12,958,160</b>	<b>\$ 9,091,611</b>	<b>\$ 6,000,000</b>	<b>\$ 5,500,000</b>
<b>Kansas Water Office</b>					
Assessment & Evaluation	\$ 554,421	\$ 469,786	\$ 540,000	\$ -	\$ -
GIS Data Base Development	\$ 175,000	\$ 173,640	\$ 170,000	\$ -	\$ -
MOU-Storage Operations & Maintenance	\$ 329,920	\$ 366,802	\$ 360,364	\$ -	\$ -
Technical Assistance to Water Users	\$ 437,547	\$ 518,733	\$ 413,000	\$ -	\$ -
Weather Stations	\$ 49,000	\$ 48,620	\$ -	\$ -	\$ -
Water Resource Education	\$ 40,378	\$ 41,322	\$ 45,000	\$ -	\$ -
Weather Modification	\$ 168,000	\$ 97,935	\$ 90,000	\$ -	\$ -
Wichita Aquifer Recharge Project	\$ 563,531	\$ 657,459	\$ 500,000	\$ -	\$ 600,000
Neosho River Basin Issues	\$ 6,140	\$ 392,250	\$ -	\$ -	\$ -
Market Based Seed Grants	\$ -	\$ -	\$ -	\$ -	\$ 300,000
Reservoir Data Analysis System	\$ -	\$ -	\$ -	\$ -	\$ 300,000
Improved Monitoring and Data Collection	\$ -	\$ -	\$ -	\$ -	\$ 800,000
<b>Total - Kansas Water Office</b>	<b>\$ 2,323,937</b>	<b>\$ 2,766,548</b>	<b>\$ 2,118,364</b>	<b>\$ -</b>	<b>\$ 2,000,000</b>
<b>Department of Wildlife &amp; Parks</b>					
Aquatic Nuisance Species Protection	\$ -	\$ -	\$ 200,000	\$ -	\$ 750,000
Stream (Biological) Monitoring	\$ 28,800	\$ -	\$ -	\$ -	\$ -
<b>Total - Department of Wildlife &amp; Parks</b>	<b>\$ 28,800</b>	<b>\$ -</b>	<b>\$ 200,000</b>	<b>\$ -</b>	<b>\$ 750,000</b>
<b>Total State Water Plan Expenditures</b>	<b>\$ 15,625,547</b>	<b>\$ 17,884,731</b>	<b>\$ 13,339,975</b>	<b>\$ 6,000,000</b>	<b>\$ 8,500,000</b>

## KEY ACCOMPLISHMENTS

### New Tools Improve Data Sharing & Storage

Coming in spring 2012, the Master Well Inventory will provide a single-source, comprehensive inventory of groundwater wells in Kansas. In addition, the Kansas Water Office has developed and will maintain a water resource data section on the agency website at: [www.kwo.org/links/WaterResourceData.html](http://www.kwo.org/links/WaterResourceData.html).



### Dam Safety & Hazard Prevention

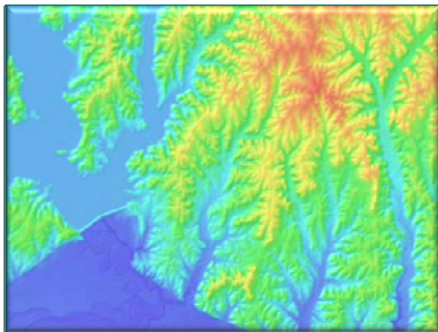
Flood protection activities were supported through the Kansas Department of Agriculture, Division of Conservation. In FY 2011, this program funded the construction of five new dams and rehabilitated six; in FY 2012, eight dams were constructed and six rehabilitated. Inundation mapping for existing flood control dams was funded for 12 structures.

### Foundation Set for Continued Nutrient and Sediment Reduction

The Kansas Watershed Restoration and Protection Strategy (WRAPS) Program received national recognition in 2011. The Tuttle Creek watershed plan was highlighted by the Environmental Protection Agency (EPA)

as one of the best in the nation. The Office of Management and Budget (OMB) touted the Kansas WRAPS program as one of the most successful watershed programs in the U.S. Implementation of watershed plans are resulting

in reductions of nitrogen, phosphorous, sediment and other compounds identified as priorities in Kansas watersheds.



### Light Detecting and Ranging (LiDAR)

High resolution elevation data derived from LiDAR technology with funding now available will cover all or parts of 25 counties and the Missouri River representing 54 percent of the state. The data is used for reservoir sustainability strategies, flood inundation mapping, targeting of wetlands for protection or restoration and the development of Digital Flood Insurance Rate Maps.

The above highlights, other significant accomplishments and high priority issues can be found in the Kansas Water Authority's Annual Report to the Governor and Legislature.