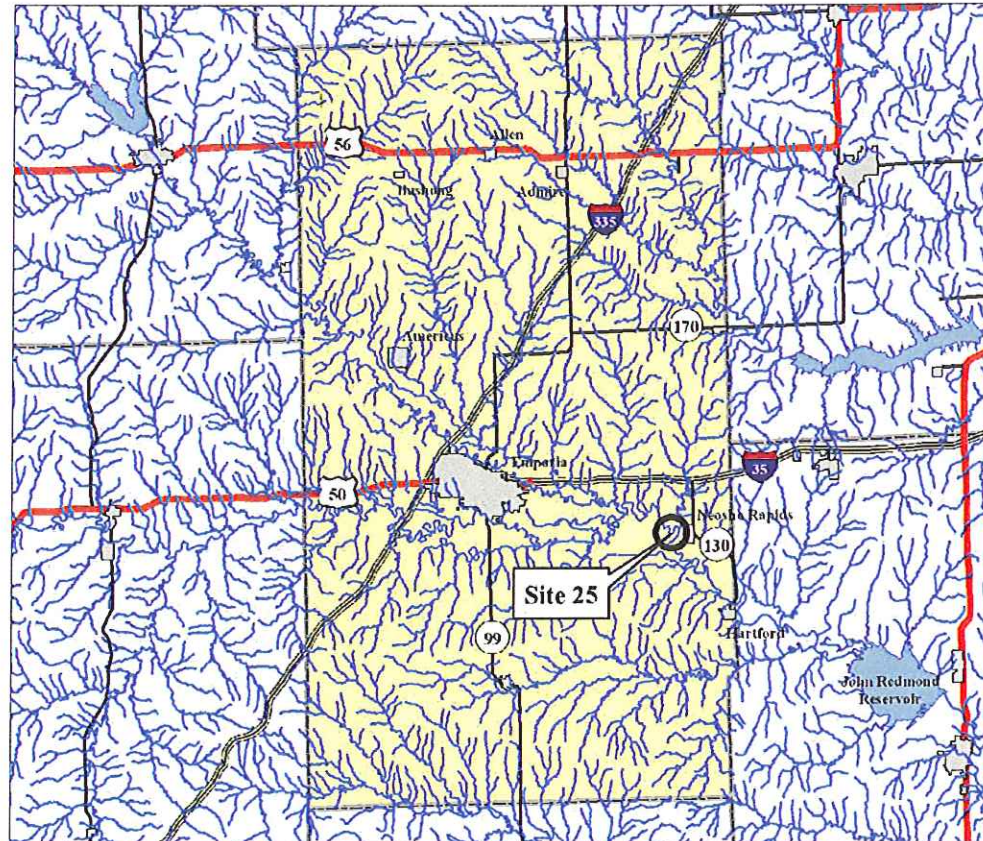


# NEOSHO RIVER LYON COUNTY, KANSAS

KATHY STAYSKAL

NE 1/4 SECTION 30, T19S, R13E



LYON COUNTY MAP  
NOT TO SCALE

### Sheet Index

Sheet Number	Sheet Title
1	Cover Sheet
2	Plan Sheet
3	Cross Section Sheet

**AS-BUILT**  
POST CONSTRUCTION  
DRAWINGS



SITE LOCATION MAP  
NOT TO SCALE

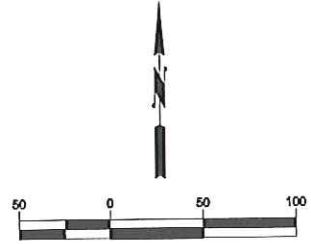
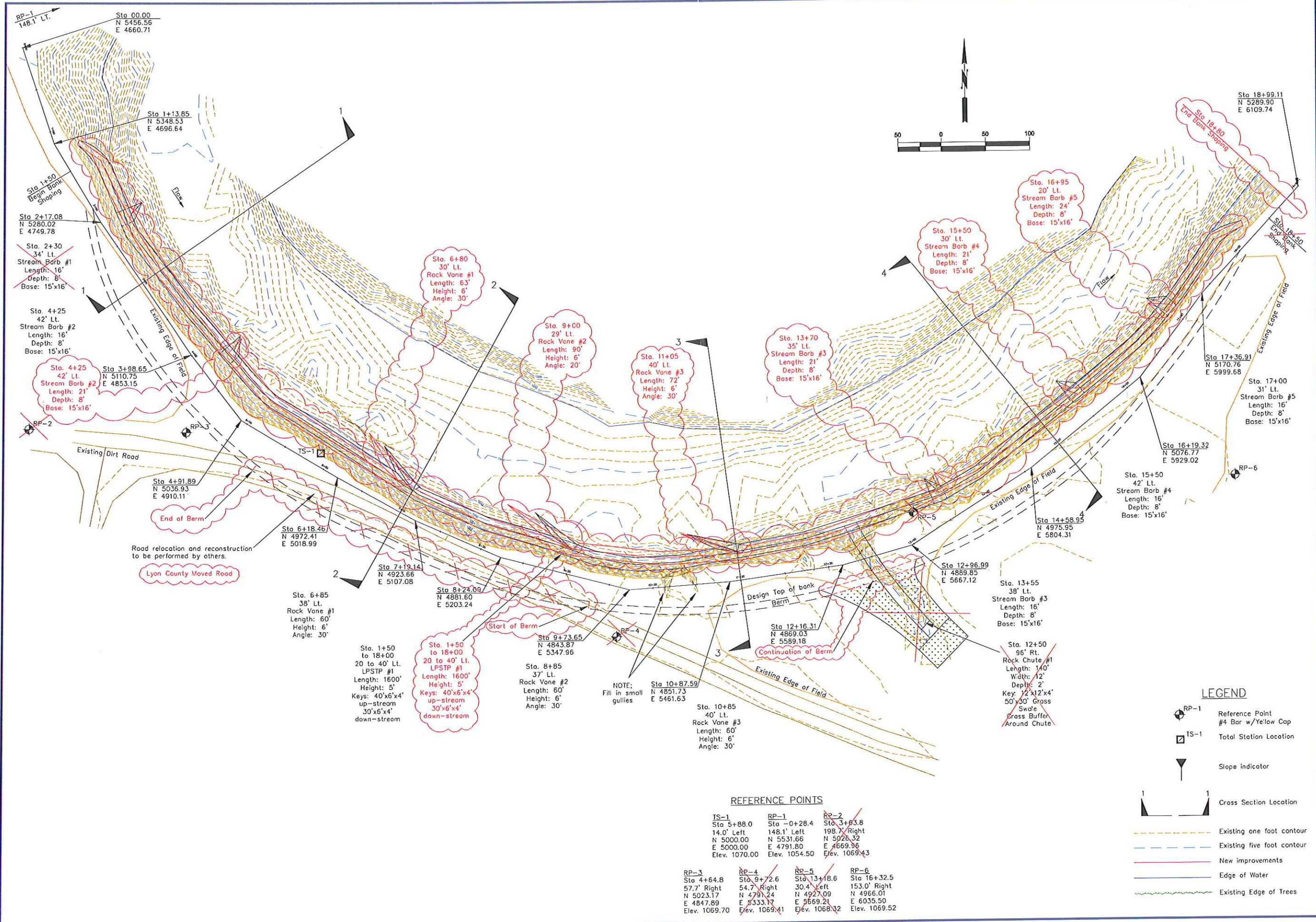


1200 SW Executive Dr. Topeka, Kansas 66615 785-272-2252



16377 S. KAW STREET OLATHE, KS 66062  
913-708-0670





**BROWNING ENVIRONMENTAL SOLUTIONS, INC.**  
 16377 S. KAW STREET OLATHE, KS 66062  
 913-708-0670

**WATERSHED**  
 CONSULTANTS  
 1200 SW Executive Dr. Topeka, Kansas 66615 785-272-2252

**NEOSHO RIVER, KANSAS**  
**LYON COUNTY, KANSAS**  
 KATHY STAYSKAL  
 SITE 25 PLAN SHEET



DESIGNED	BAE
DRAWN BY	JAG
APPROVED BY	JNB
DESIGN PROJ.	14668.055
CONST	-----
SCALE	AS NOTED
DATE	10/12/2010
DRAWING NO.	<b>CO2</b>
SHEET NO.	2 of 3

**LEGEND**

- RP-1 Reference Point
- #4 Bar w/ Yellow Cap
- IS-1 Total Station Location
- Slope indicator
- Cross Section Location
- Existing one foot contour
- Existing five foot contour
- New improvements
- Edge of Water
- Existing Edge of Trees

**REFERENCE POINTS**

IS-1 Sta 5+88.0 14.0' Left N 5000.00 E 5000.00 Elev. 1070.00	RP-1 Sta -0+28.4 148.1' Left N 5531.66 E 4791.80 Elev. 1054.50	RP-2 Sta 3+63.8 198.7' Right N 5028.32 E 4669.96 Elev. 1069.43	RP-3 Sta 4+64.8 57.7' Right N 5023.17 E 4847.89 Elev. 1069.70	RP-4 Sta 9+72.6 54.7' Right N 4791.24 E 5333.17 Elev. 1069.41	RP-5 Sta 13+18.6 30.4' Left N 4927.09 E 5669.21 Elev. 1068.32	RP-6 Sta 16+32.5 153.0' Right N 4966.01 E 6035.50 Elev. 1069.52
---	---	---	--	--	--	--

NOTE:  
Fill in small gullies

RP-1  
148.1' Lt.  
Sta 00.00  
N 5456.56  
E 4660.71

Sta 1+13.85  
N 5348.53  
E 4696.64

Sta 2+17.08  
N 5280.02  
E 4749.78

Sta. 2+30  
34' Lt.  
Stream Barb #1  
Length: 16'  
Depth: 8'  
Base: 15'x16'

Sta. 4+25  
42' Lt.  
Stream Barb #2  
Length: 16'  
Depth: 8'  
Base: 15'x16'

Sta. 4+25  
42' Lt.  
Stream Barb #2  
Length: 21'  
Depth: 8'  
Base: 15'x16'

Sta 3+98.65  
N 5110.75  
E 4853.15

Sta 4+91.89  
N 5036.93  
E 4910.11

Sta. 6+85  
38' Lt.  
Rock Vane #1  
Length: 60'  
Height: 6'  
Angle: 30°

Sta. 1+50  
to 18+00  
20 to 40' Lt.  
LPSTP #1  
Length: 1600'  
Height: 5'  
Keys: 40'x6'x4'  
up-stream  
30'x6'x4'  
down-stream

Sta. 1+50  
to 18+00  
20 to 40' Lt.  
LPSTP #1  
Length: 1600'  
Height: 5'  
Keys: 40'x6'x4'  
up-stream  
30'x6'x4'  
down-stream

Sta. 8+85  
37' Lt.  
Rock Vane #2  
Length: 60'  
Height: 6'  
Angle: 30°

Sta. 9+73.65  
N 4843.87  
E 5347.96

Sta 10+87.59  
N 4851.73  
E 5461.63

Sta. 10+85  
40' Lt.  
Rock Vane #3  
Length: 60'  
Height: 6'  
Angle: 30°

Sta. 6+80  
30' Lt.  
Rock Vane #1  
Length: 63'  
Height: 6'  
Angle: 30°

Sta. 9+00  
29' Lt.  
Rock Vane #2  
Length: 90'  
Height: 6'  
Angle: 20°

Sta. 11+05  
40' Lt.  
Rock Vane #3  
Length: 72'  
Height: 6'  
Angle: 30°

Sta. 13+70  
35' Lt.  
Stream Barb #3  
Length: 21'  
Depth: 8'  
Base: 15'x16'

Sta. 15+50  
30' Lt.  
Stream Barb #4  
Length: 21'  
Depth: 8'  
Base: 15'x16'

Sta. 16+95  
20' Lt.  
Stream Barb #5  
Length: 24'  
Depth: 8'  
Base: 15'x16'

Sta 18+99.11  
N 5289.90  
E 6109.74

Sta 17+00  
31' Lt.  
Stream Barb #5  
Length: 16'  
Depth: 8'  
Base: 15'x16'

Sta 16+19.32  
N 5076.77  
E 5929.02

Sta. 15+50  
42' Lt.  
Stream Barb #4  
Length: 16'  
Depth: 8'  
Base: 15'x16'

Sta 14+58.94  
N 4975.95  
E 5804.31

Sta. 13+55  
38' Lt.  
Stream Barb #3  
Length: 16'  
Depth: 8'  
Base: 15'x16'

Sta. 12+50  
96' Rt.  
Rock Chute #1  
Length: 140'  
Width: 12'  
Depth: 2'  
Key: 12'x12'x4'  
50'x30' Grass  
Swale  
Cross Buffer  
Around Chute

Sta 12+16.31  
N 4869.03  
E 5589.18

Sta 12+96.99  
N 4889.85  
E 5667.12

Road relocation and reconstruction  
to be performed by others.  
Lyon County Moved Road

End of Berm

Start of Berm

Continuation of Berm

Existing Edge of Field

Existing Edge of Field

Sta 18+50  
End Bank Shaping

Sta 18+80  
End Bank Shaping

RP-1

RP-3

RP-4

RP-4

RP-5

RP-6

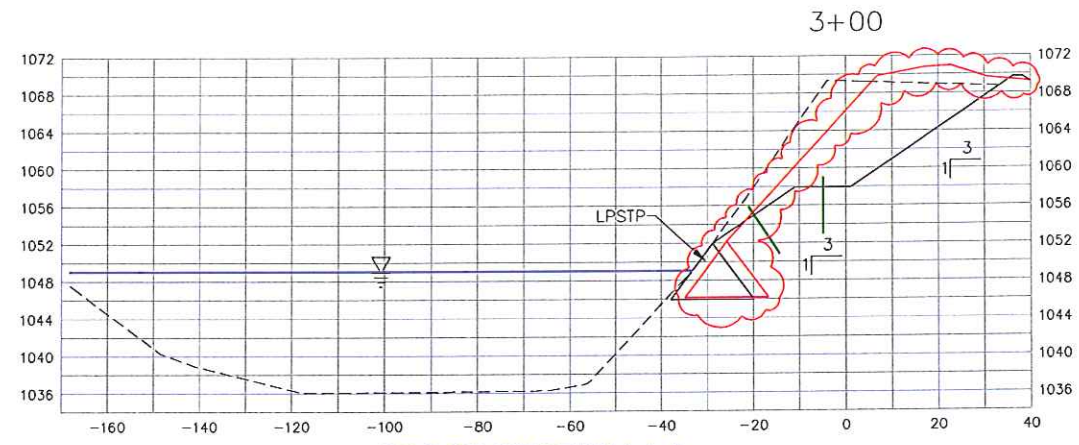
1

2

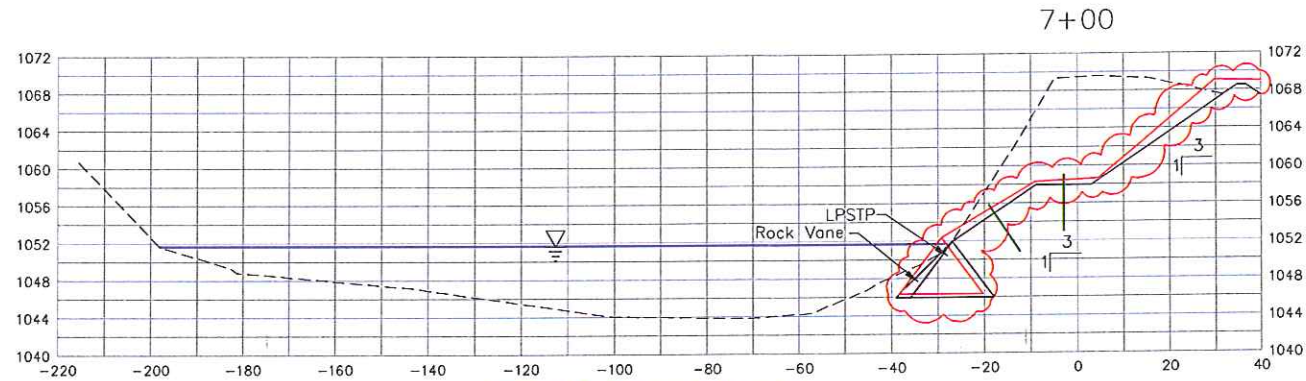
3

4

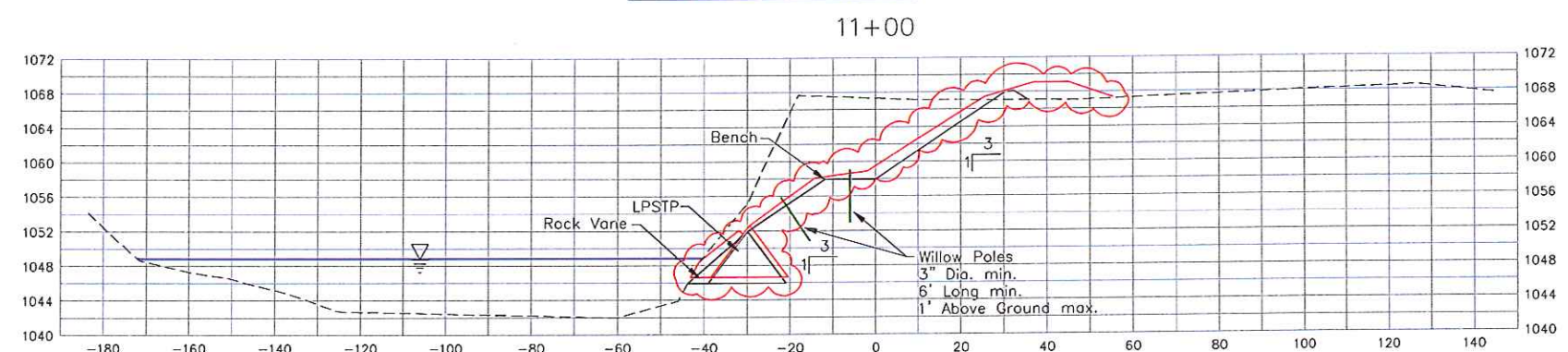




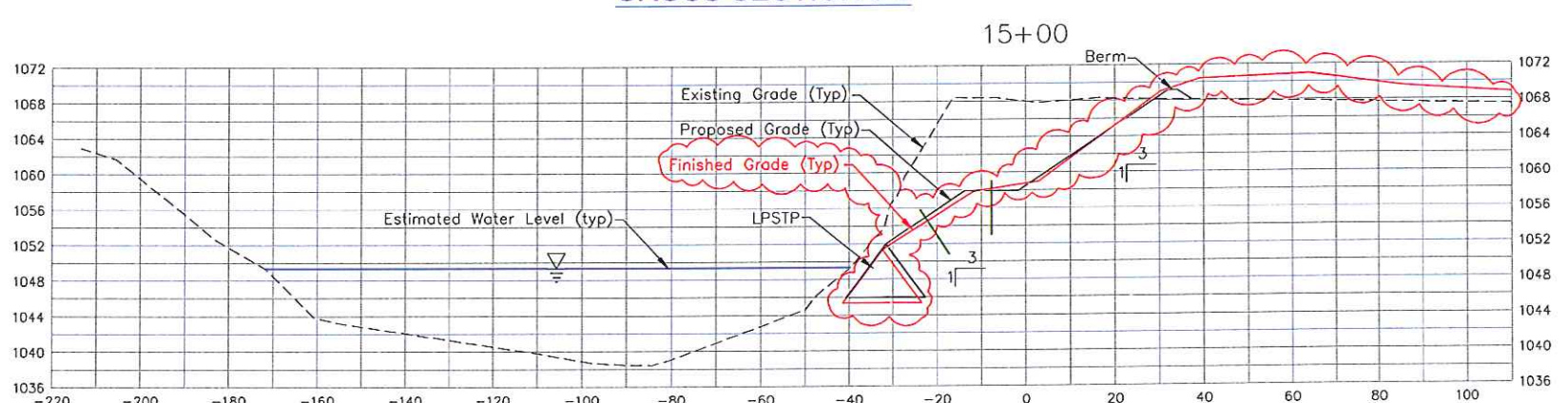
CROSS SECTION 1-1



CROSS SECTION 2-2



CROSS SECTION 3-3



CROSS SECTION 4-4



DESIGNED	BAE
DRAWN BY:	JAG
APPROVED BY:	JNB
DESIGN PROJ:	14668.055
CONST	-----
SCALE:	AS NOTED
DATE:	10/12/2010
DRAWING NO:	<b>CO3</b>
SHEET NO:	3 of 3