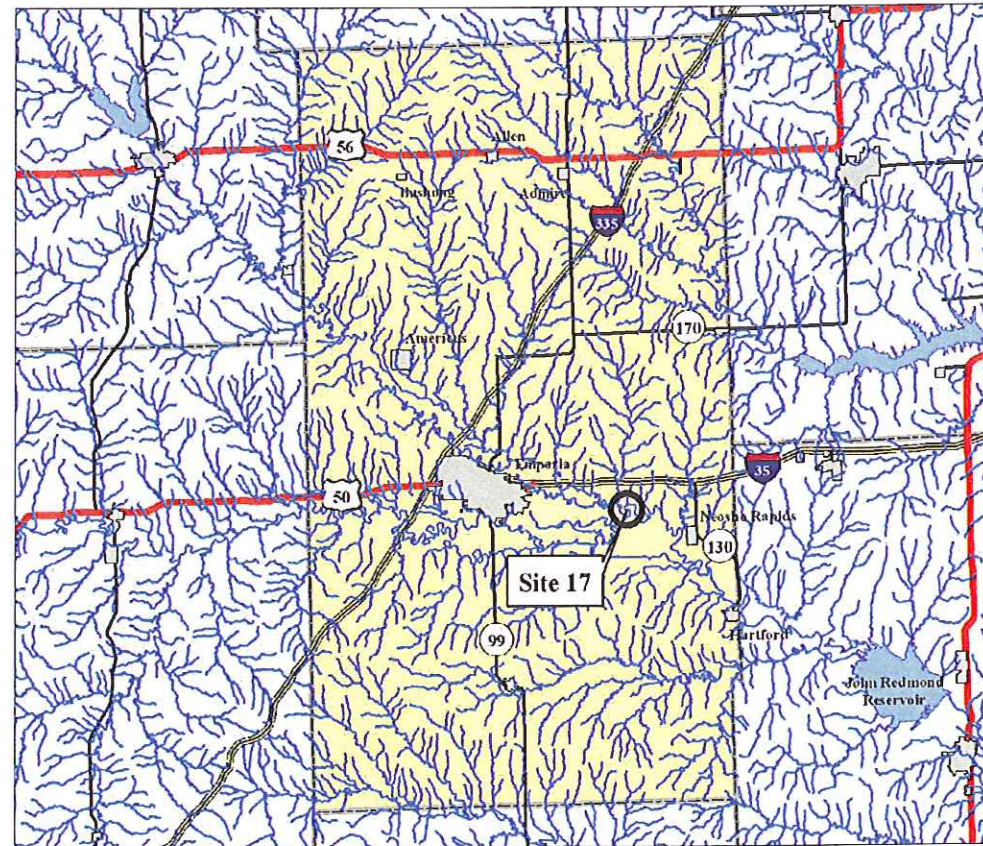


# NEOSHO RIVER LYON COUNTY, KANSAS

BRUCE PEARSON

NW 1/4 SECTION 23, T19S, R12E



LYON COUNTY MAP  
NOT TO SCALE

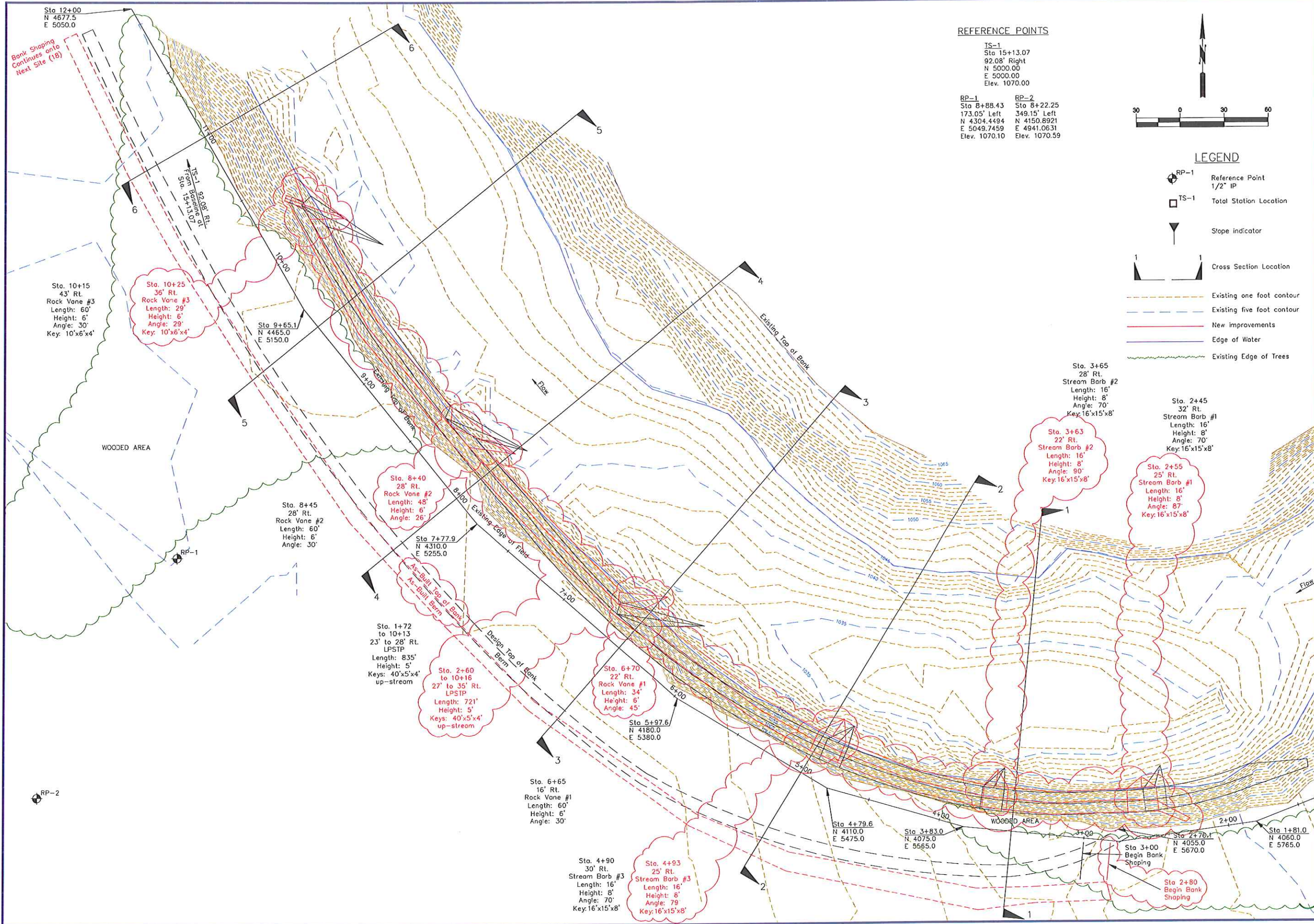
### Sheet Index

Sheet Number	Sheet Title
1	Cover Sheet
2	Plan Sheet
3 - 4	Cross Section Sheets

**AS-BUILT**  
POST CONSTRUCTION  
DRAWINGS



SITE LOCATION MAP  
NOT TO SCALE

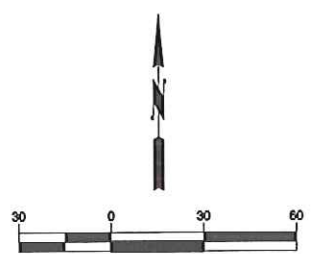


**REFERENCE POINTS**

TS-1  
Sta 15+13.07  
92.08' Right  
N 5000.00  
E 5000.00  
Elev. 1070.00

RP-1  
Sta 8+88.43  
173.05' Left  
N 4304.4494  
E 5049.7459  
Elev. 1070.10

RP-2  
Sta 8+22.25  
349.15' Left  
N 4150.8921  
E 4941.0631  
Elev. 1070.59



**LEGEND**

- ⊙ RP-1 Reference Point  
1/2" IP
- TS-1 Total Station Location
- ▲ Slope indicator
- ⊥ Cross Section Location
- - - Existing one foot contour
- - - Existing five foot contour
- New Improvements
- Edge of Water
- Existing Edge of Trees

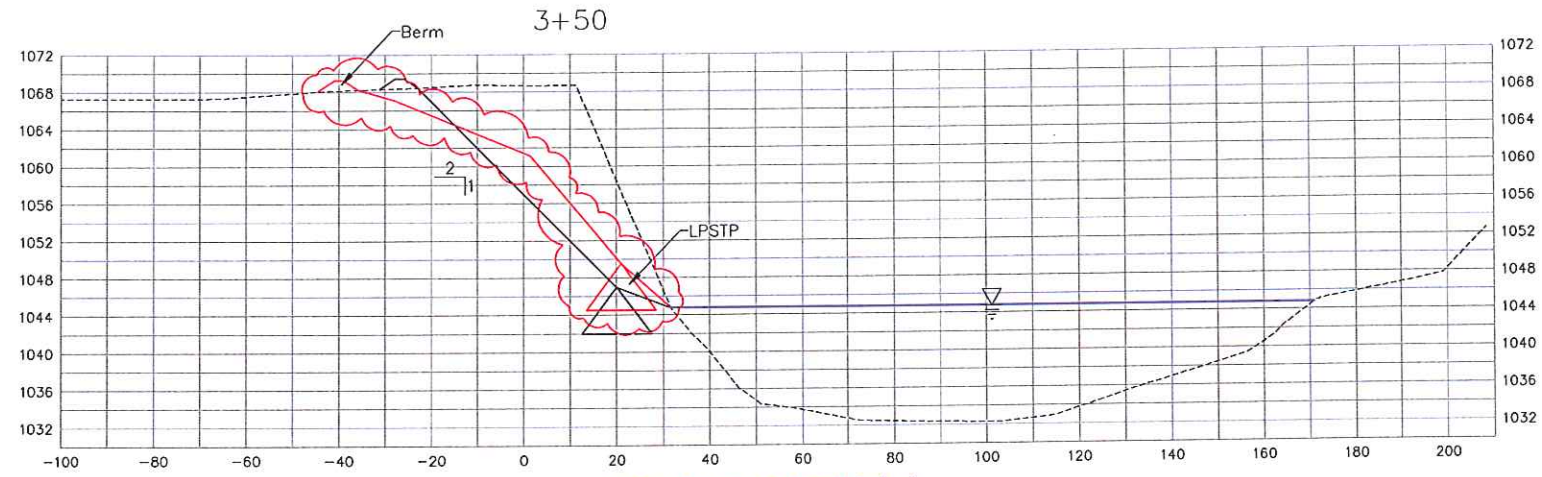
**BROWNING ENVIRONMENTAL SOLUTIONS, INC.**  
16377 S. KAWI STREET, OLATH, KS 66062  
913-708-0870

**THE WATERSHED**  
INSTITUTE  
1200 SW Executive Dr., Topeka, Kansas 66615 785-272-2252

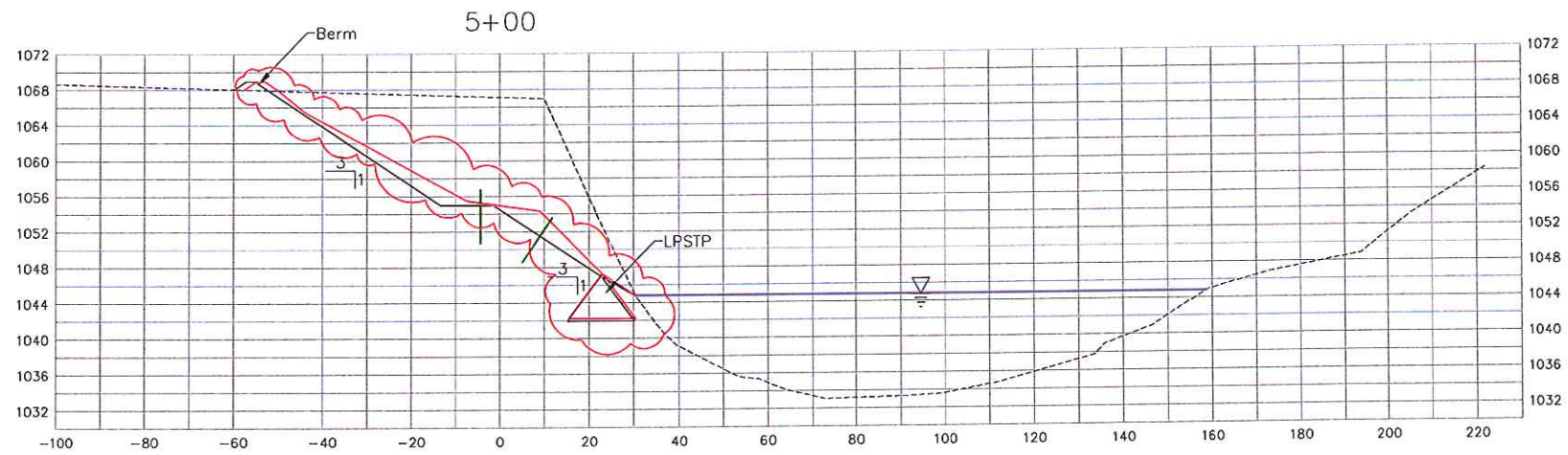
**NEOSHO RIVER  
LYON COUNTY, KANSAS**  
BRUCE PEARSON  
SITE 17 PLAN SHEET



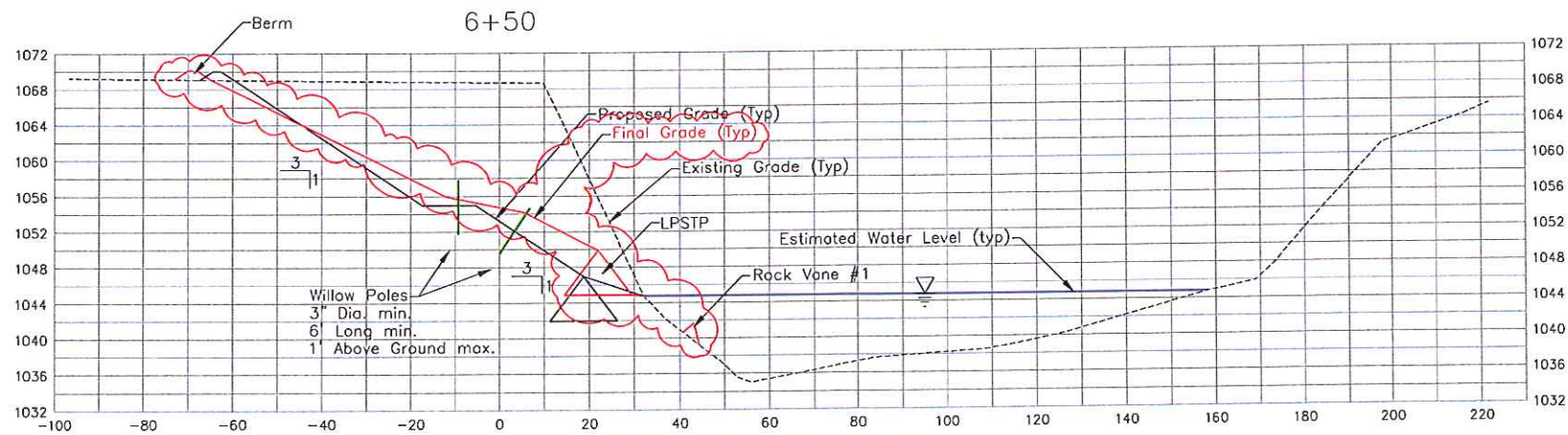
DESIGNED BY:	BAE
DRAWN BY:	JAG
APPROVED BY:	JNB
DESIGN PROJ. NO.:	14668.068
CONST.:	-----
SCALE:	AS NOTED
DATE:	11/15/2010
DRAWING NO.:	<b>CO2</b>
SHEET NO.:	2 of 4



CROSS SECTION 1-1



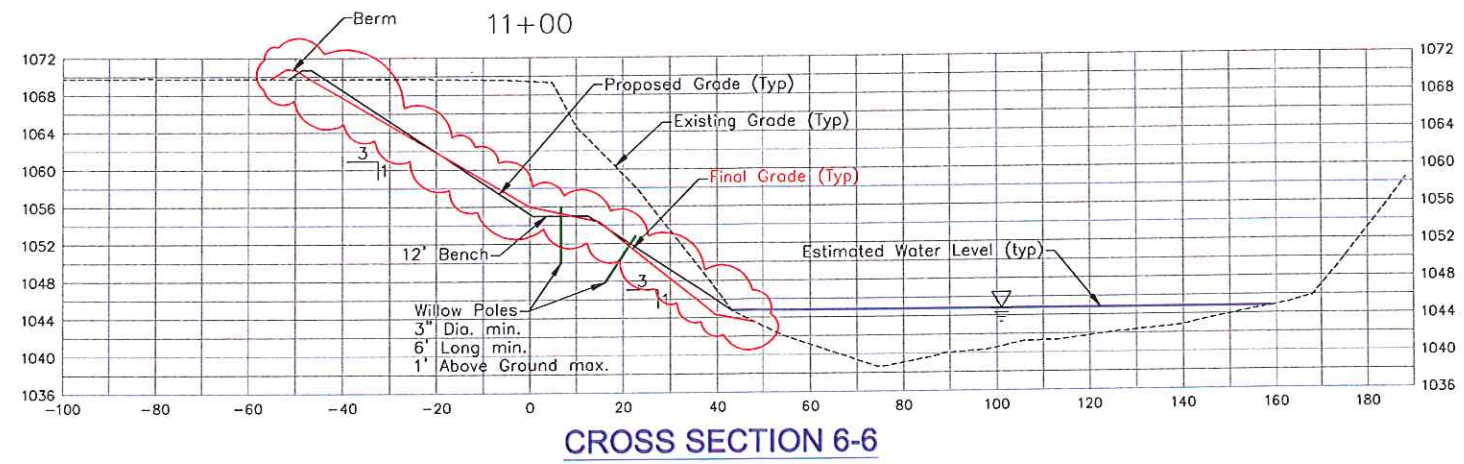
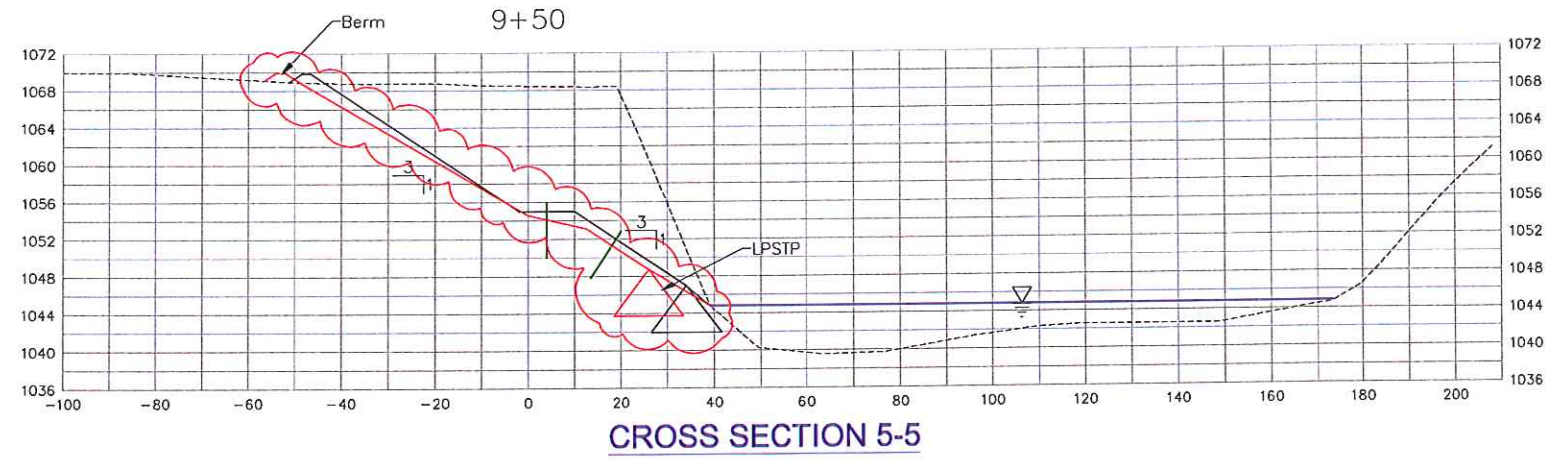
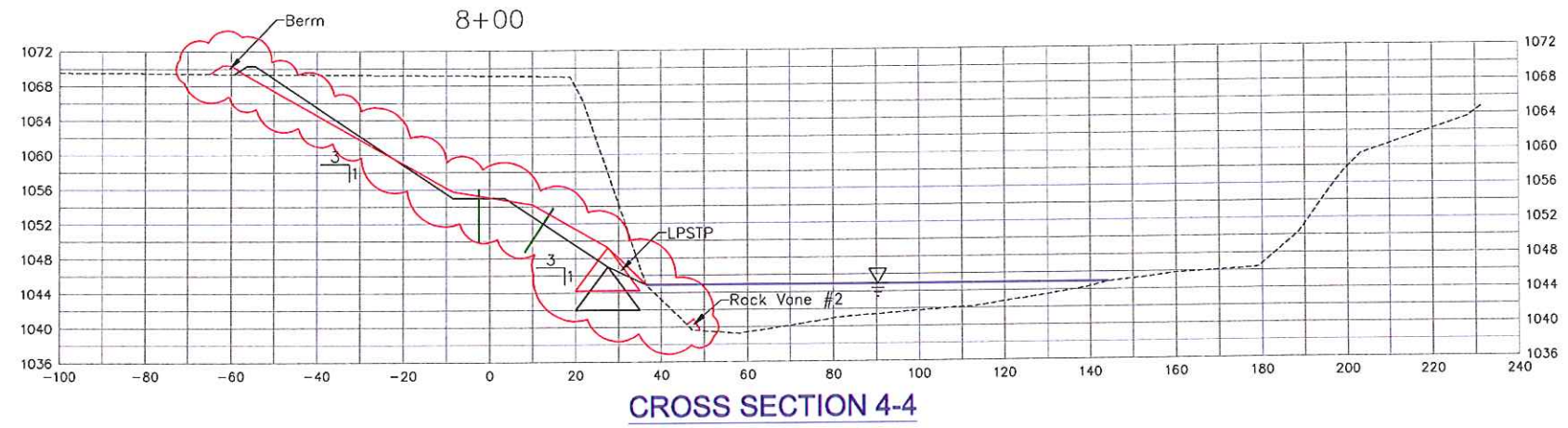
CROSS SECTION 2-2



CROSS SECTION 3-3



DESIGNED:	BAE
DRAWN BY:	JAG
APPROVED BY:	JNB
DESIGN PROJ.:	14668.068
CONST:	-----
SCALE:	AS NOTED
DATE:	11/15/2010
DRAWING NO.:	<b>CO3</b>
SHEET NO.:	3 of 4



DESIGNED	BAE
DRAWN BY:	JAG
APPROVED BY:	JNB
DESIGN PROJ:	14668.068
CONST	-----
SCALE:	AS NOTED
DATE:	11/15/2010
DRAWING NO.	<b>CO4</b>
SHEET NO.	4 of 4