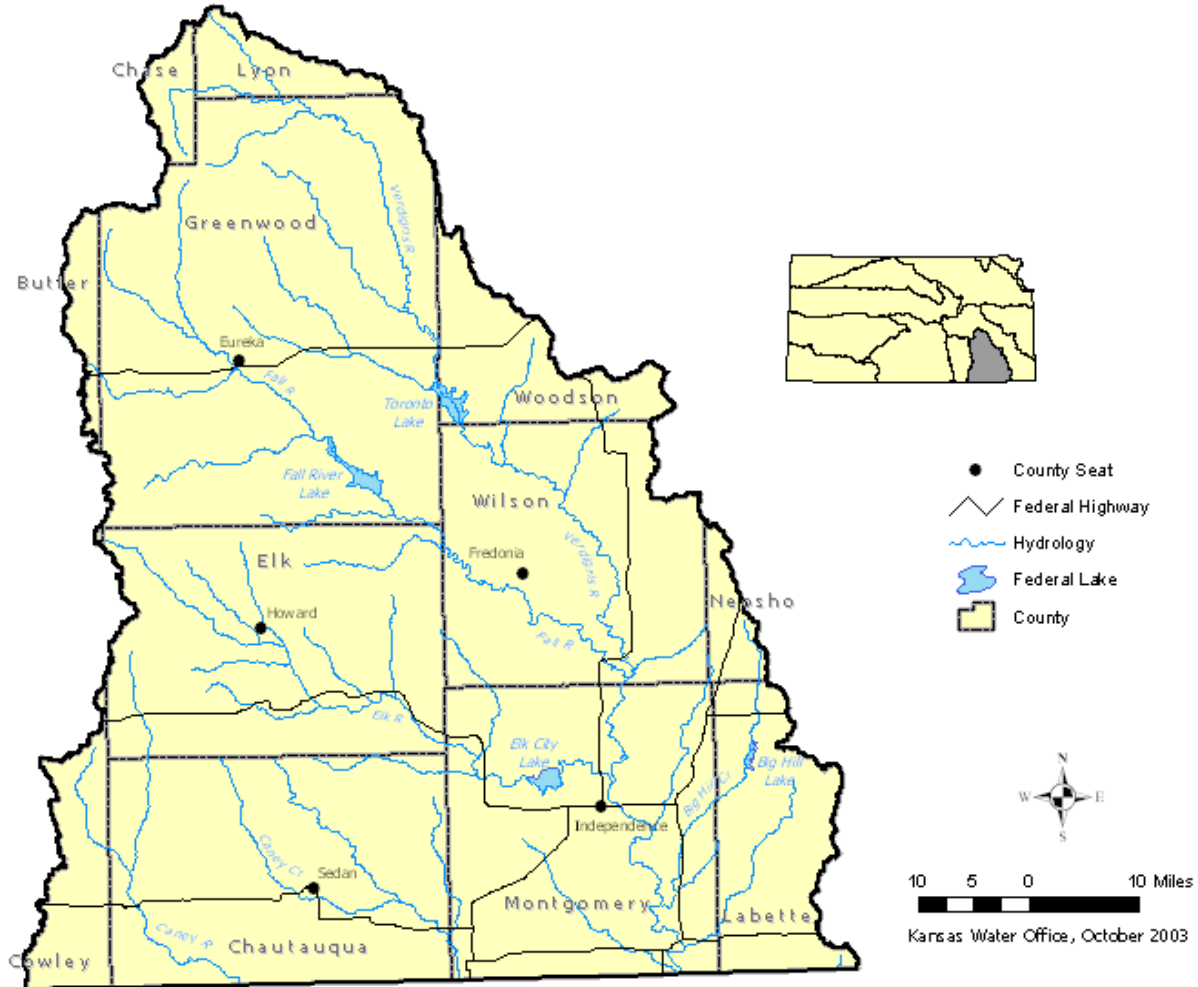


KANSAS WATER AUTHORITY/KANSAS WATER OFFICE APPLICATION FOR BASIN ADVISORY COMMITTEE MEMBERSHIP

VERDIGRIS BASIN



KANSAS WATER AUTHORITY/KANSAS WATER OFFICE

Basin advisory committees provide advice to the Kansas Water Office and the Kansas Water Authority regarding the formulation and revision of the Kansas Water Plan, its implementation, and other matters. Committees represent each of the 12 major river basins in the state (see map) and are comprised of either 9 or 11 members, as determined by the basin advisory committee. New members are nominated from a pool of applicants for each category and are nominated by the present membership, subject to confirmation by the Kansas Water Authority.

Basin Advisory Committee members must reside in the basin in which they serve. Members serve four year, voluntary terms and may be reappointed. Please note: Basin Advisory Committee members serve without compensation and receive no reimbursement for expenses.

Please indicate, by filling out the appropriate category information section, which categories you wish to be considered for on this BAC. Each category has criteria that must be met by the BAC member representing the category. You may select as many categories as you wish. The BAC will only consider you for categories in which you indicate an interest.

Verdigris Basin Advisory Committee			
Representative Category	Criteria	Vacancies/Openings	For each category you would like to be considered for, provide a statement on how you meet the criteria.
Municipal Public Water Supplier (CC)	An employee of a public water supply utility or an elected or other appointed official of a city that operates a public water supply system as defined by K.S.A. 65-162a and amendments thereto.	Position is currently full. Open for applications in 2013.	
Industry/Commerce (CC)	An individual engaged in a business that uses water in manufacturing, production, transport or storage of products or in providing commercial services, including use in connection with power plants, secondary and tertiary oil recovery, and aggregate extraction.	Position is currently full. Open for applications in 2011.	
Agriculture (CC)	An individual whose livelihood is tied to agricultural production, through crops or livestock.	Position is currently full. Open for applications in 2011.	
Fish & Wildlife (CC)	An individual with demonstrated and recognized expertise in fish or wildlife management or conservation of fish and wildlife habitat. *	Position is currently full. Open for applications in 2013.	
Recreation (CC)	An individual with demonstrated and recognized expertise in the recreational use of streams or lakes or an employee of a city or county parks department, economic development board, or a chamber of commerce directly engaged in the promotion of water based recreation. *	Position is currently full. Open for applications in 2011.	

* The applicant should be able to demonstrate, through organization membership, professional affiliation, civic involvement, or other appropriate means, that (s)he has experience in and is involved with issues related to this category.

Verdigris Basin Advisory Committee

Representative Category	Criteria	Vacancies/Opening	For each category you would like to be considered for, provide a statement on how you meet the criteria.
Conservation/ Environment (CC)	An individual with demonstrated and recognized expertise in conservation or protection of natural resources. *	Position is currently full. Open for applications in 2011.	
At – Large Public (CC)	Anyone who lives in the basin with an expressed interest in water resources.	Position is currently full. Open for applications in 2013.	
Agriculture (BSC)	An individual whose livelihood is tied to agricultural production, through crops or livestock.	No longer accepting applications for this position. Membership pending.	
Commerce/Industry (BSC)	An individual engaged in a business that uses water in manufacturing, production, transport or storage of products or in providing commercial services, including use in connection with power plants, secondary and tertiary oil recovery, and aggregate extraction.	Position is currently full. Open for applications in 2013.	
Other Public Water Supplier (BSC)	The nominee must be an employee, board member, or other designated ex-officio board member of a rural water district, a wholesale water district, or other water supplier.	Position is currently full. Open for applications in 2013.	
Watershed Protection (BSC)	The nominee must be a board member, employee or other officially designated representative of a conservation district, resource conservation and development organization, watershed restoration and protection group, the Watershed Institute, the Kansas Alliance for Wetlands and Streams, a city or county planning and zoning department, or a watershed district.	Position is currently full. Open for applications in 2011.	

* The applicant should be able to demonstrate, through organization membership, professional affiliation, civic involvement, or other appropriate means, that (s)he has experience in and is involved with issues related to this category.

I affirm that the facts set forth above in my application for membership are correct and complete to the best of my knowledge.

Applicant
Signature _____ Date _____

Please return completed application form to: Director, Kansas Water Office, 901 S. Kansas Avenue, Topeka, Kansas 66612-1249. You may also fax the form to 785-296-0878. Please call 1-888-526-9283 (toll free) if should you have any questions.

(CC) = Core Category
(BSC) = Basin Specific Category

* The applicant should be able to demonstrate, through organization membership, professional affiliation, civic involvement, or other appropriate means, that (s)he has experience in and is involved with issues related to this category.