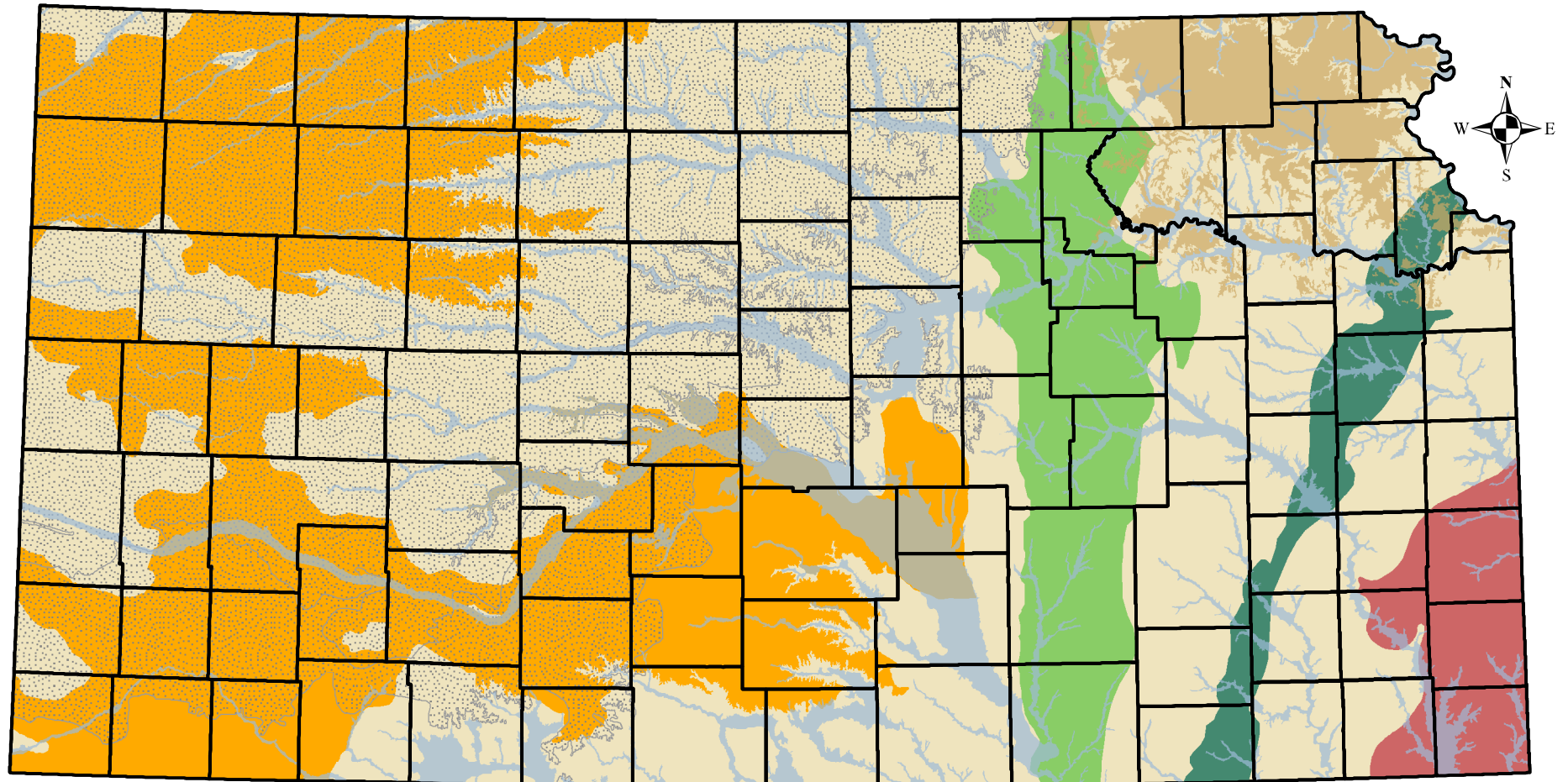


# Major Kansas Aquifers



- |  |   |   |   |
|--|---|---|---|
|  Alluvial |  Glacial Drift |  High Plains |  Ozark  |
|  Dakota   |  Flint Hills   |  Osage       |  County |

0 25 50 100 Miles

Data Source: U. S. Geological Survey  
Prepared for Kansas Water Plan 2008